



# HIGHLY VISIBLE OFFICE BUILDING

330 KNOLLWOOD DRIVE  
RAPID CITY, SD 57701

**FOR LEASE \$11.00/SF/YR NNN**



**2,996 SF AT I-90 & HAINES AVENUE**

KW Commercial

*Your Property—Our Priority<sup>SM</sup>*

2401 West Main Street, Rapid City, SD 57702

605.335.8100 | [www.RapidCityCommercial.com](http://www.RapidCityCommercial.com)

Keller Williams Realty Black Hills

**EXCLUSIVELY LISTED BY:**

**Gina Plooster**

*Broker Associate*

605.519.0749

[gina@rapidcitycommercial.com](mailto:gina@rapidcitycommercial.com)

**Chris Long**, SIOR, CCIM

*Commercial Broker*

605.939.4489

[chris@rapidcitycommercial.com](mailto:chris@rapidcitycommercial.com)

Disclaimer: The information contained herein has been given to us by the owner of the property or other sources we deem reliable. We have no reason to doubt its accuracy, but we do not guarantee it. All information should be verified prior to purchase or lease.



## PROPERTY DETAILS

### PROPERTY OVERVIEW

- Excellent location for office users wanting easy access to I-90 and close proximity to shopping, restaurants and entertainment.
- Turn-key layout includes 5 private offices, conference room and open cubicle spaces; current office furniture and cubicles can be included.
- Dedicated parking for up to 15.
- Less than 10 minutes to Box Elder and Black Hawk and less than 5 minutes from Downtown.

### PROPERTY INFORMATION

Acres:	0.51
Total SQFT:	2,996
Base Lease Rate:	\$11.00/SF/YR
NNN Rate:	\$4.50/SF/YR
Monthly Rent:	\$3,870.00

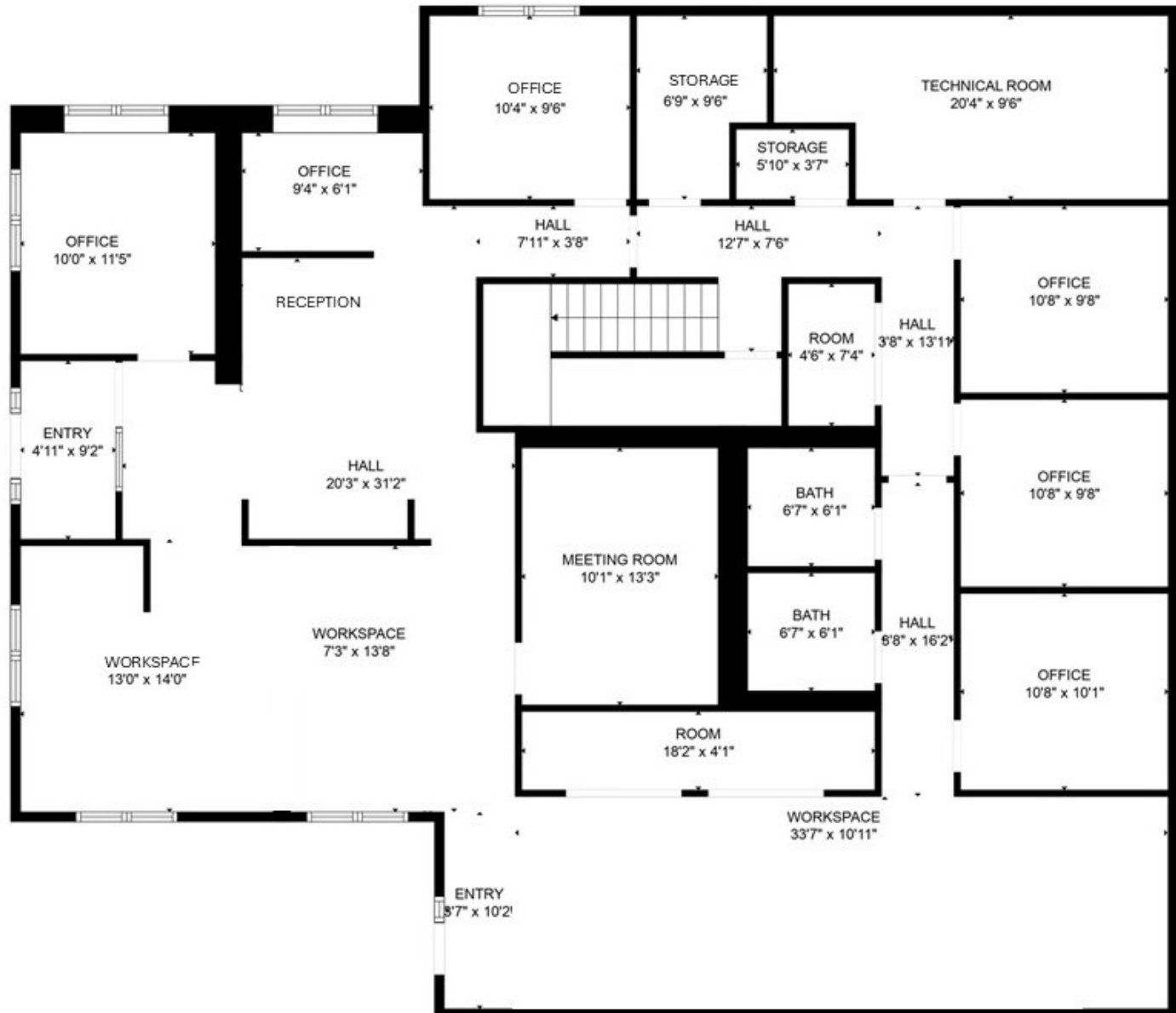




**PHOTOS**



**FLOOR PLAN**





## WELCOME TO SOUTH DAKOTA AND THE BLACK HILLS!

The Mount Rushmore State of South Dakota has carved a solid reputation for **business friendliness**. It is consistently ranked in the top five states for setting up and conducting business. Small and big companies alike are discovering South Dakota's **central location and progressive business climate**.

The Black Hills boasts the country's most recognized national monument - Mount Rushmore - bringing millions of tourists from all over the world to Western South Dakota every year. For the past 10 years, South Dakota tourism has posted an increase in visitation, visitor spending and overall impact on the state's economy with **14.9 million visitors to South Dakota, \$5.09 billion in visitor spending, and 58,824 jobs sustained** by the tourism industry.

### BUSINESS FRIENDLY TAXES

<b>NO</b> corporate income tax
<b>NO</b> franchise or capital stock tax
<b>NO</b> personal property or inventory tax
<b>NO</b> personal income tax
<b>NO</b> estate and inheritance tax



### REGIONAL STATISTICS

Rapid City Metro Population	156,686
Rapid City Population Growth	3.05% YoY
Rapid City Unemployment Rate	1.9%
Household Median Income	\$65,712

### SD TOURISM 2024 STATISTICS

Room Nights	5.2 M. Booked
Park Visits	8.7 M Visitors
Total Visitation	14.9 M Visitors
Visitor Spending	\$398.7 M in Revenue

## RAPID CITY

- #1** AreaDevelopment-Leading Metro in the Plains
- #10** CNN Travel-Best American Towns to Visit

- #1** US Census-Fastest-Growing City in Midwest
- #17** Milken Institute-Best-Performing Small City

- #4** Realtor.com-Emerging Housing Markets
- #33** WalletHub-Happiest Cities in America

## SOUTH DAKOTA

- #1** Business Tax Climate Index
- #2** States with Best Infrastructure
- #3** Business Friendliness

- #1** Most Stable Housing Markets
- #3** Best States for Business Costs
- #4** Forbes Best States for Starting a Business

- #2** Fastest Job Growth
- #3** Long-Term State Fiscal Stability
- #5** Best States to Move To